

# **MONEX<sub>40</sub>**

## **EXTRUDED ALUMINIUM ASSEMBLY SYSTEM**



**MONK Conveyors Limited  
Unit 9 The Christy Estate  
Ivy Road  
Aldershot  
Hampshire GU12 4TX**

**Tel: 01252 369800  
Fax: 01252 369801  
Email: [sales@monk-conveyors.co.uk](mailto:sales@monk-conveyors.co.uk)**



**Made in England**

# **MONK**

## EXTRUDED ALUMINIUM FRAME BUILDING SYSTEM

Type No.	Description	Page
	EXTRUSIONS	3
	ORDERING DETAILS - CUTTING & DRILLING	4
	CONNECTOR SYSTEM	5
	FIXINGS, ANGLE PLATES & BRACKETS	6
	COVERS, PANELS & ACCESSORIES	7
	EXAMPLES OF MONEX IN USE	8
M6000	GUARDING - FENCE TYPE	9
MK705	WORK BENCHES - MEDIUM DUTY	10
MK715	WORK BENCHES - HEAVY DUTY	11

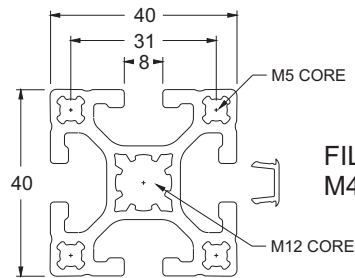
## EXTRUDED ALUMINIUM FRAME BUILDING SYSTEM

High quality extrusion at a reasonable cost - Exceptional rigidity - Easy to assemble

40 square and 40 x 80 - Comprehensive range of fittings and accessories

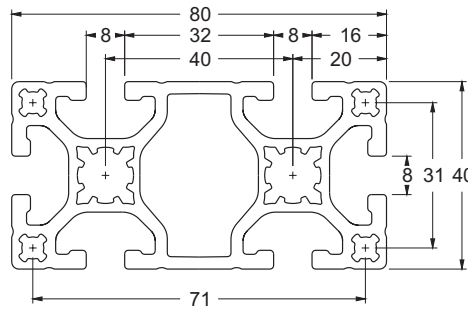
Anodising - 10 microns - gives a hard scratch resistant finish

EXTRUSION 40 x 40mm  
M44 £6.48 per meter



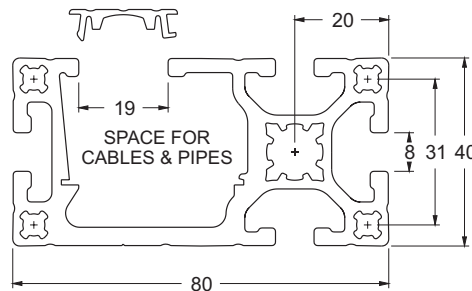
FILLER STRIP 8mm uPVC  
M4-FS-8 £0.65 per meter

EXTRUSION 40 x 80mm  
M48 £10.08 per meter

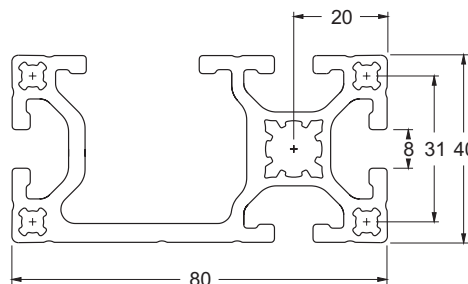


FILLER STRIP 19mm uPVC  
M4-FS-19 £1.00 per meter

EXTRUSION 40 x 80mm  
M48T £9.14 per meter

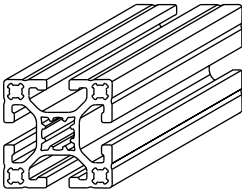


EXTRUSION 40 x 80mm  
M48T2 £9.14 per meter

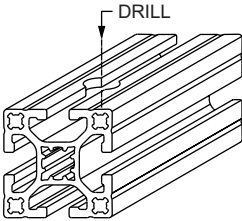


Cutting and machining charge £1.60 per piece.

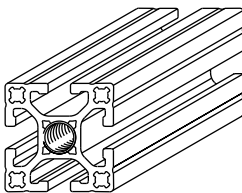
**CU**  
CUT TO LENGTH  
NO DRILLING



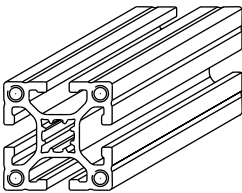
**DO**  
DRILL ONE END  
FOR CONNECTOR



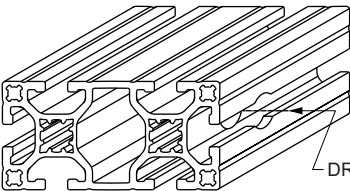
**D0/90**  
DRILL TWO ENDS  
FOR CONNECTORS  
AT ANGLE OF 0,90,180  
OR 270 deg CLOCKWISE



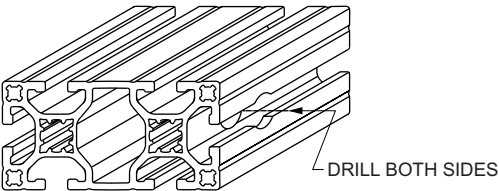
**TC**  
TAP CENTRE HOLE  
M12 x 100 DEEP  
FOR FOOT



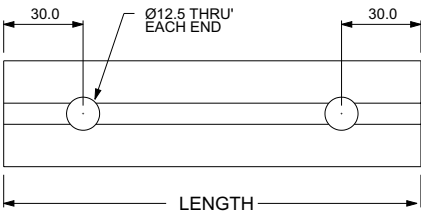
**TO**  
TAP 4 OUTER HOLES  
M6 x 15 DEEP



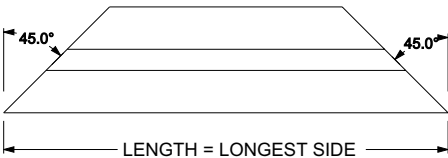
**DT**  
DRILL TWO FACES  
FOR CONNECTORS  
TYPE M48



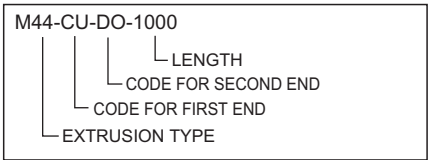
**FB**  
FOOT BEAM WITH  
TWO HOLES



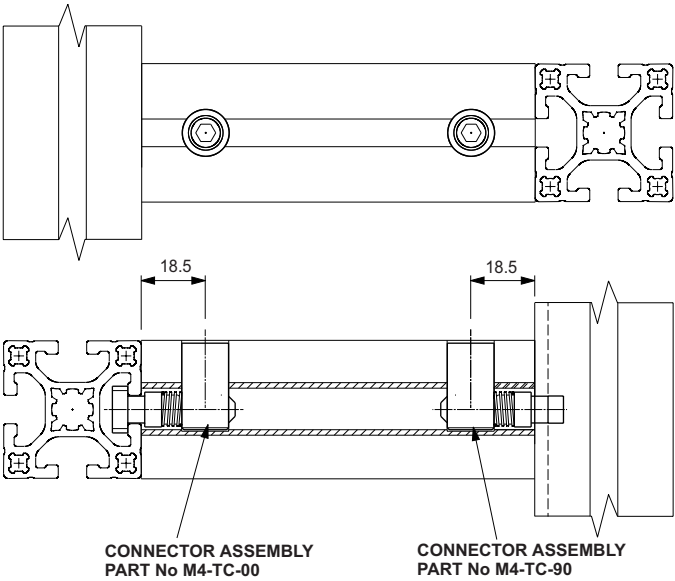
**MI**  
MITRED BEAMS



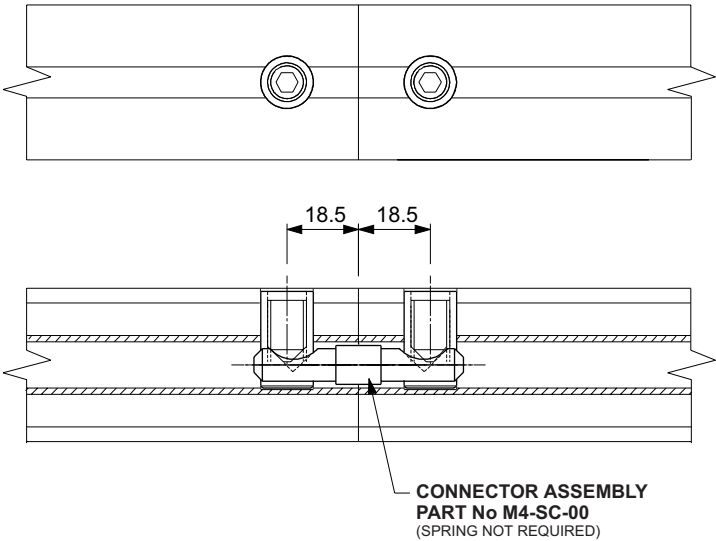
**ORDERING  
EXAMPLE**



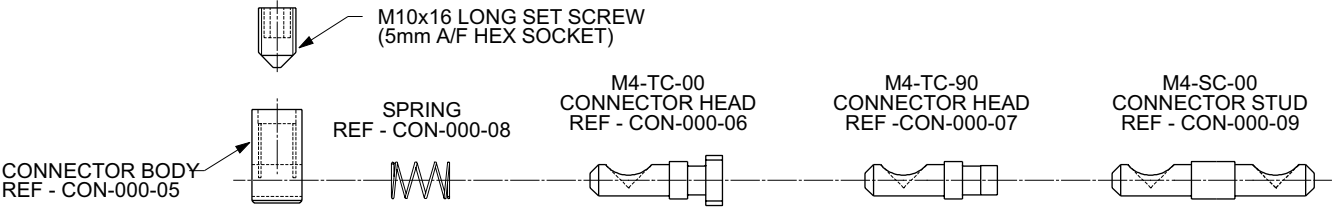
**TEE  
CONNECTOR**



**STRAIGHT  
CONNECTOR**

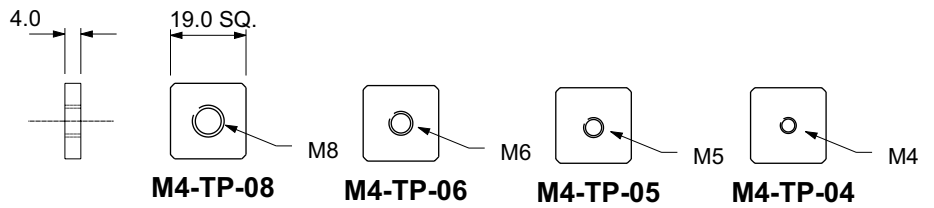


**CONNECTOR  
ASSEMBLY**



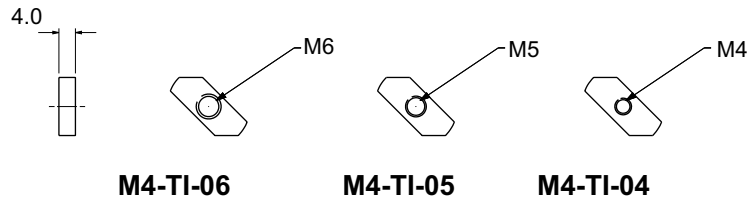
### PLAIN NUTS

Slide into extrusion tee slots



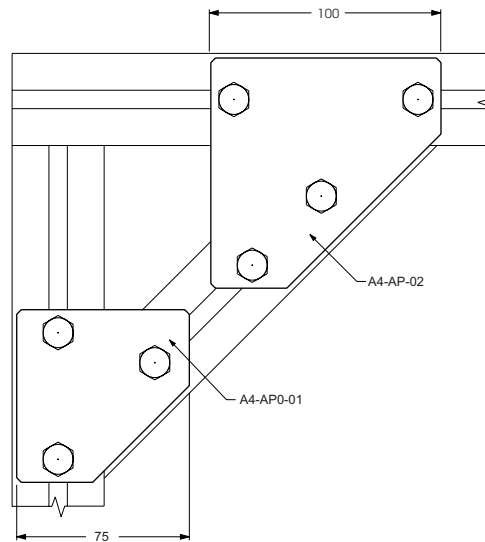
### TWIST-IN NUTS

Can be fitted after frame has been assembled



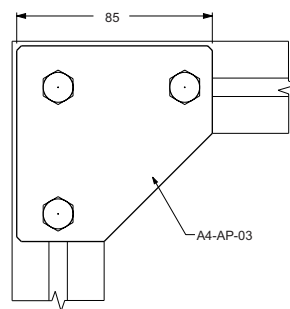
### ANGLE PLATES

Two angle plates used with 45 degree strut. Anodised aluminium 3mm thick with M8 fixings.



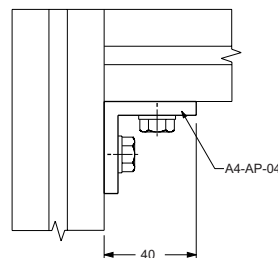
### ANGLE PLATE

Used for corners with heavy loads. Anodised aluminium 3mm thick with M8 fixings.



### ANGLE PLATE

Used when external panels are fitted. Anodised aluminium 3mm thick with M8 fixings.



### END CAPS

High impact plastic.

M4-EC-40 for M44 section

M4-EC-80 for M48 section



### SWIVEL FOOT

M12-80-125 M12 thread x 125 long x 80 diameter

M12-50-125 M12 thread x 125 long x 50 diameter

### CASTER

M4-CL-75 75 diameter - locking



### FILLER STRIP

M4-FS-08 Extruded plastic grey, for 8mm slot in all extrusion.

M4-FS-19 Extruded plastic grey, for 19mm slot in M48T.

### GLAZING STRIP

M4-SP-08 Extruded rubber. For 4, 5 & 6mm thick panels.

### PANELS

Various panels are available, please phone for details.



### HANDLING MACHINE

Six machines built for Epson using 512 metres of MONEX<sub>40</sub>. Designed for automatically counting and storing printer cartridge mouldings in trays.

- Five conveyors in MONEX<sub>40</sub>
- Machine frame in MONEX<sub>40</sub>
- Bowlfeeder stand in MONEX<sub>40</sub>
- Guarding in MONEX<sub>40</sub>



### PRINTER ENCLOSURE

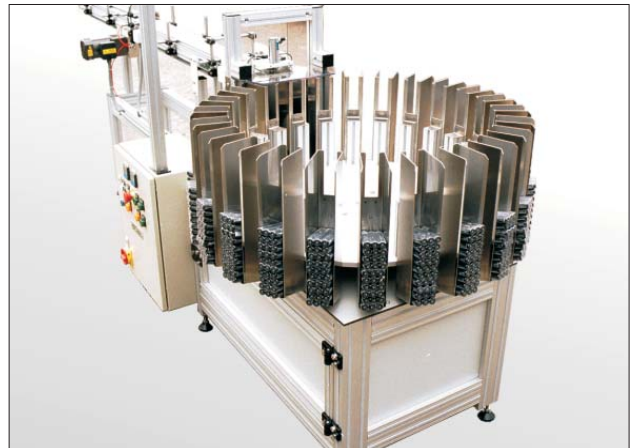
Special free standing enclosure for housing a computer and four label printers together with camera inspection for a pharmaceutical company.

- Frame in MONEX<sub>40</sub>
- Extruded aluminium alloy filler strip
- Clear doors in polycarbonate

### COLLATING MACHINES

Twenty machines built for Coty for collating cosmetic products such as lipsticks, eye shadows and powder compacts, as they leave the shrink wrapper.

- Two conveyors in MONEX<sub>40</sub>
- Machine frame in MONEX<sub>40</sub>
- Guarding in MONEX<sub>40</sub>
- Panels in 'Trespar'



### LINEAR ASSEMBLY LINE

Assembly line 25 metres long based on the MONK modular pallet system for the assembly and testing of electrical products.

- Uses 600 metres of MONEX<sub>40</sub>
- Guarding in MONEX<sub>40</sub>

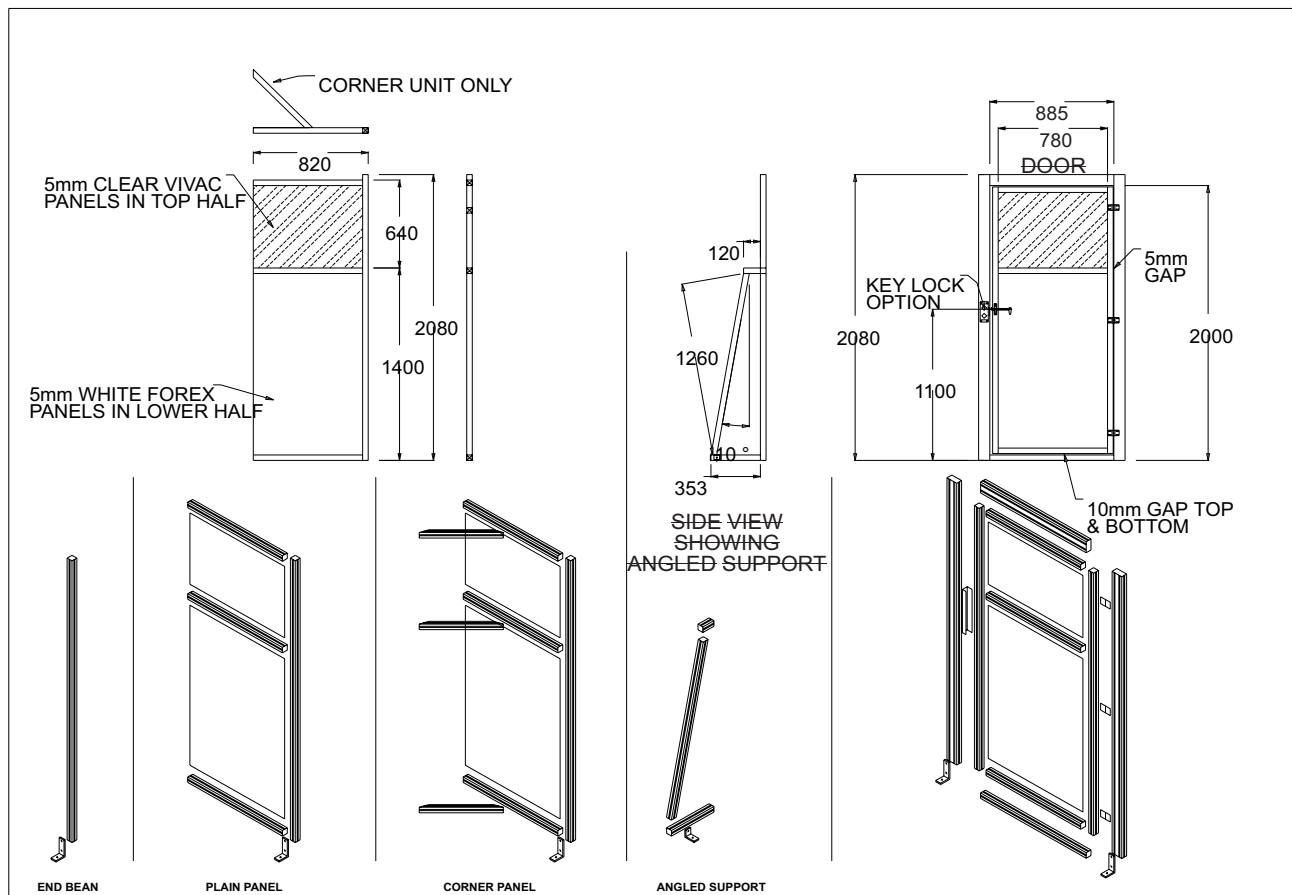


# Guarding - Fence type M6000

# MONK

## Using Monex<sub>40</sub> Extrusion

Modular panels & sections.  
Uses MONEX<sub>40</sub> 40 x 40 & 40 x 80mm.  
Clear polycarbonate windows.  
Choice of coloured infill panels.  
Wiring run inside extrusion.  
Interlock system.  
Many accessories.



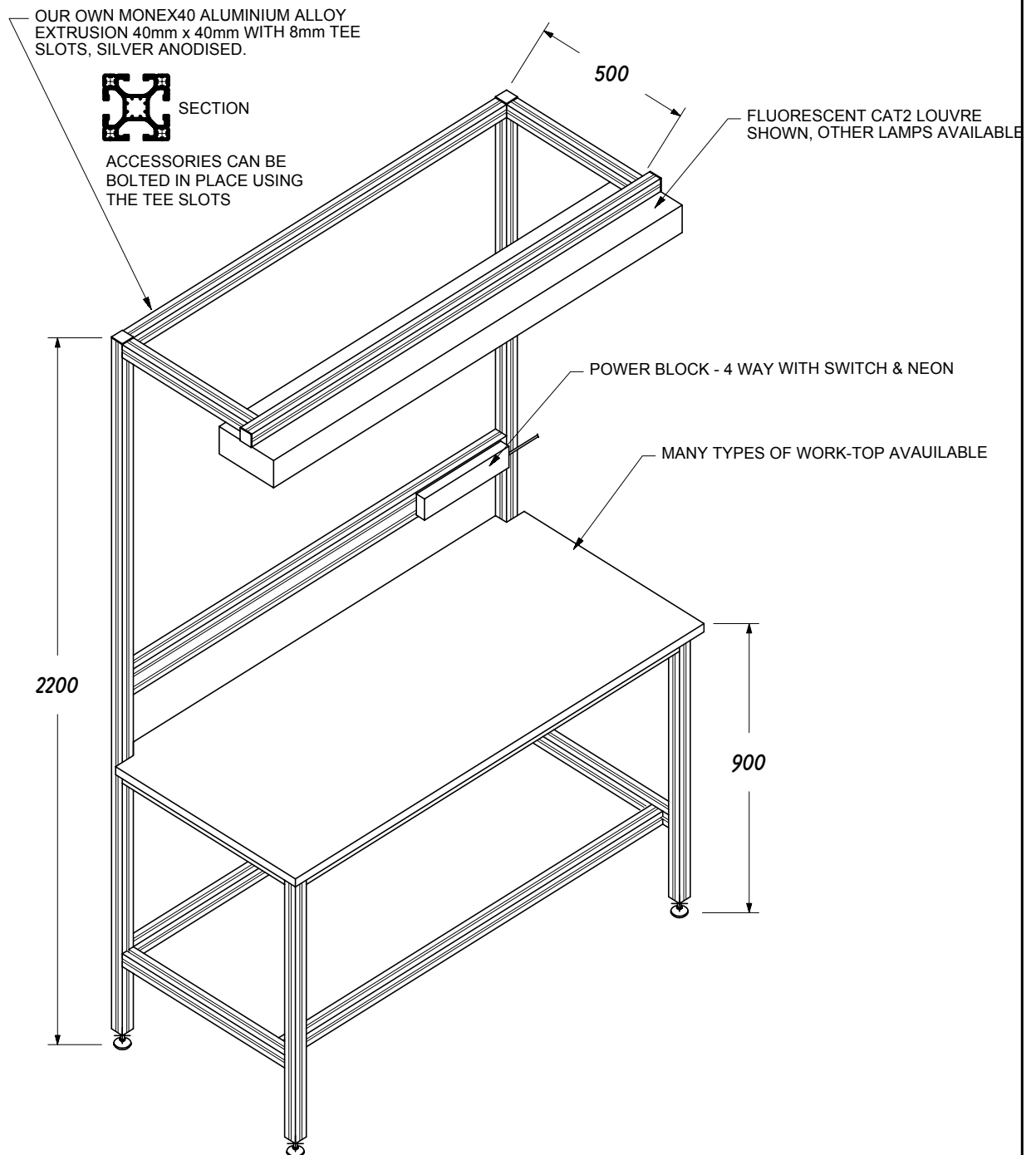
INTERLOCKED DOOR



STRAIGHT SECTION WITH  
FORK LIFT BARRIER

# MONK WORK BENCHES

## MEDIUM DUTY MK705



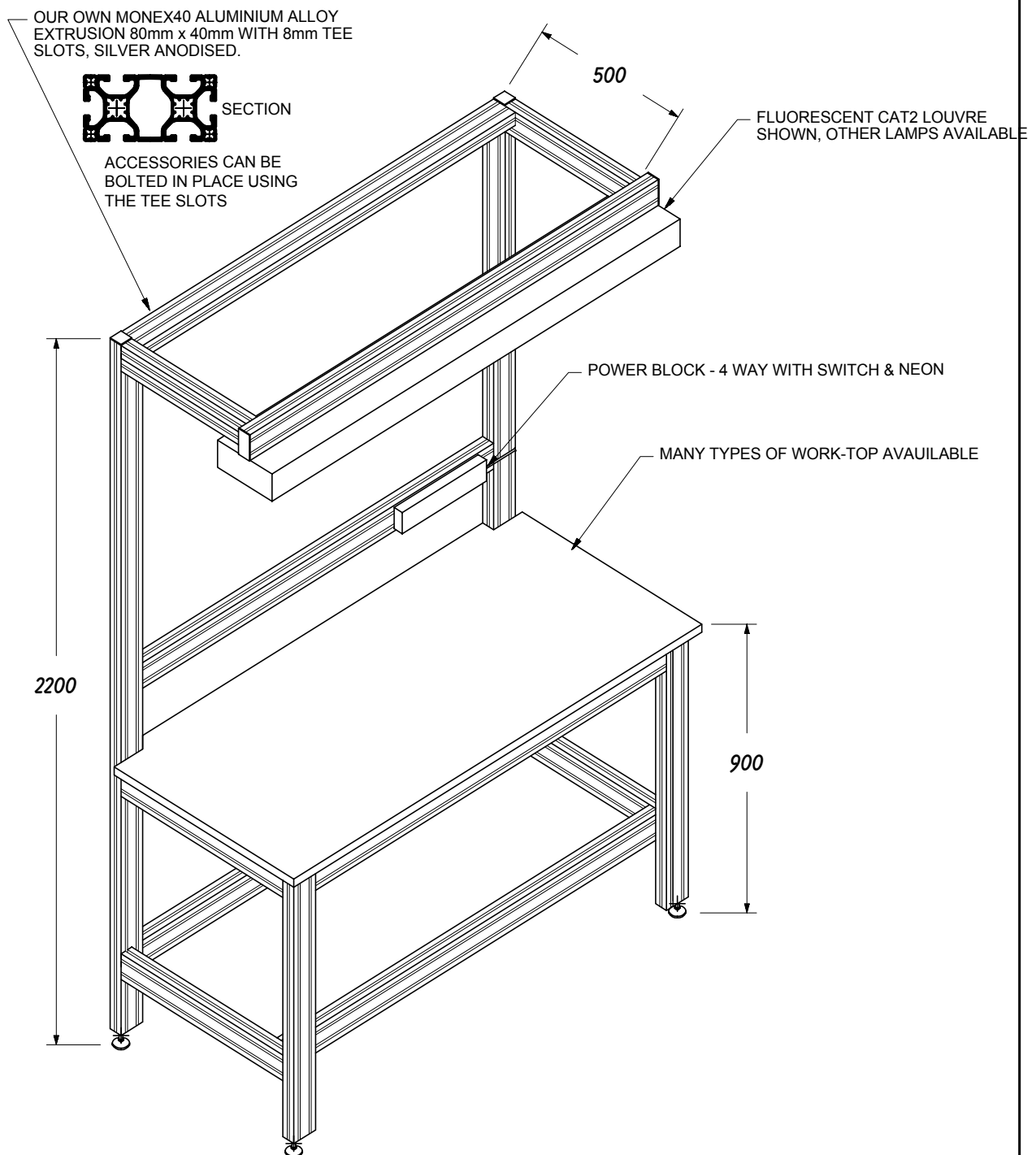
### STANDARD SIZES

**700 OR 900 DEEP**

**1200, 1500, 1800, 2000 & 2440 LONG**

# MONK WORK BENCHES

## HEAVY DUTY MK715



### STANDARD SIZES

**700 OR 900 DEEP**

**1200, 1500, 1800, 2000 & 2440 LONG**

## Notes

# MONK

Equipment and machines supplied by MONK

## CONVEYORS

Flat Belt Conveyors  
Belt Bends & Transfers  
Knife Edge Conveyors  
Small Conveyors  
Indexing Conveyors  
Multi-lane Conveyors  
Roller Conveyors  
Modular Link Belt Conveyors  
Conveyor Systems

## HANDLING EQUIPMENT

Manual Assembly Workstations  
End Of Line Auto-Stacking Machines  
Automatic Box Changers  
Pinch Belt Transfer Systems  
Pick & Place Transfers  
Handling Solutions  
Rotating Tables for End Of Line Packaging  
Packing Stations

**Monk Conveyors Limited**

[www.monk-conveyors.com](http://www.monk-conveyors.com)