



# Conveyor Systems



Large Flex-Chain Machine Loading System



Flex-Chain System Working Over Two Floors



Aluminium Roller Conveyor



Steel Roller Conveyor

**Choose the best conveyor for your project  
from our large range for a total solution**

## **MONK Conveyors Limited**

Unit 9, The Christy Estate, Ivy Road, Aldershot, Hampshire GU12 4TX  
Tel: +44(0)1252 369800 Fax: +44(0)1252 369801 Email: [sales@monk-conveyors.co.uk](mailto:sales@monk-conveyors.co.uk)

Visit our website at: [www.monk-conveyors.com](http://www.monk-conveyors.com)





## Conveyors & Handling Equipment Examples



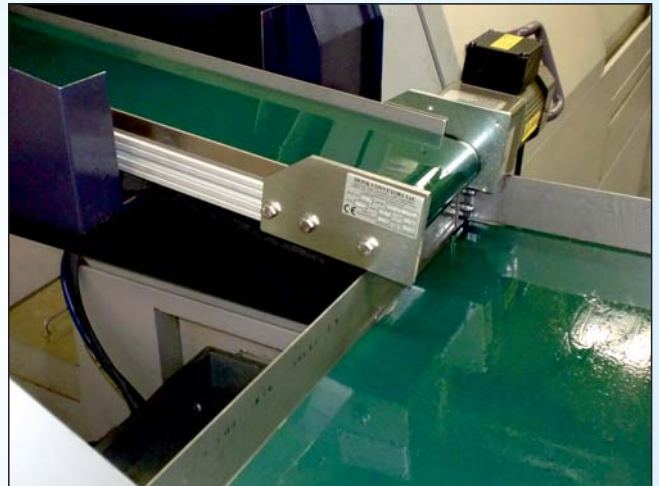
**FLEX-CHAIN PLASTIC SLAT CONVEYORS.** Ideal for efficiently conveying products between processes and machines. Very versatile, with large or small radius horizontal and vertical corners. Pinch grip system for vertical conveying. Also available in food quality stainless steel.



**AUTOMATIC LIFTS.** To give operators access to process machines products are conveyed at a high level. Our lifts are used to lower the products to the normal working height. They are then raised to the higher level again after exiting each machine.



**ROLLER CONVEYORS.** Rugged roller conveyors available in plain gravity or line-shaft driven with the option of plastic or steel rollers. Many accessories such as stops, gates, diverters, mergers, transfer units. Also available in stainless steel.



**MACHINING CENTRE UNLOAD CONVEYORS.** Used here for unloading finished components from a machining centre. Drip trays are used to collect the cutting oil and return it to the system.



**ALUMINIUM ROLLER CONVEYORS.** With an anodised aluminium frame and guide rails these are the best looking conveyors the are available on the market today. They are lineshaft driven and use many of the modules and designs from our steel conveyors.



**INTERFLOOR CONVEYORS.** Very efficient method of transporting goods up to and down from a mezzanine floor. Uses a high grip belt and a powerful drive.

For all your conveying requirements consult **MONK Conveyors Ltd**





## Conveyors & Handling Equipment Examples



**LARGE INSTALLATIONS.** Spectacle lens handling plant using our Flex Chain conveyors, flat belt conveyors and vertical lifters. The system handles plastic trays which contain two lenses. A sophisticated but operator friendly control system ensures that trays take the correct path through the plant.



**ROTATING STORAGE TABLES.** Used for creating a buffer store at the end of a line, products are fed onto the table as it slowly rotates. An operator will then visit the table and pack or transfer the product back into the line.



**ELEVATORS.** The modular linked belt runs in a groove in the elevator side frames which are manufactured from low friction polyethylene. Belt widths, horizontal lengths and inclined lengths are infinitely variable. Belts are supplied in a range of plastic materials, flights come in a range of sizes..



**STORES TO DESPATCH SYSTEM.** Transporting trays with a prescription for two spectacle lenses from five RAX Lens Stores to the dispatch department, before being sent to the optician.



**MAT TOP CONVEYORS.** Our MatTop conveyors are fully compatible with our MODU FlexChain conveyors and are used in many different industries such as Food, Pharmaceutical, Automotive, Electrical and packaging.

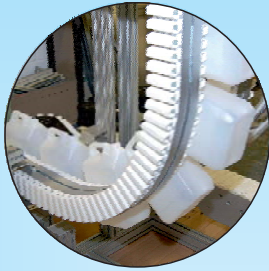


**BELT CONVEYOR.** Our belt conveyors have a very narrow profile and are built using our standard modules making them quick and simple to construct. They have 'T'-slots on both sides for installing guide rails, sensors, etc. There is a choice of different drive units each with a low noise level.

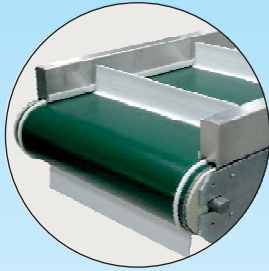
For all your conveying requirements consult **MONK Conveyors Ltd**



## Conveyors & Handling Equipment Examples



**Grip Conveyors**



**Special Flat Belts**



**Mat Top Conveyors**



**Hand Assembly  
Stations with Rotating  
Storage Tables**



**Carton Handling  
Conveyors**



**Escapements**



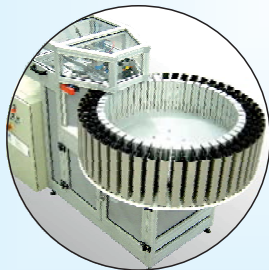
**Special Roller  
Conveyors**



**Rotating Storage  
Tables**



**Roller Conveyor  
Diverter Units**



**Indexing Buffer Stores**



**Elevators - Plastic or  
Stainless Steel**



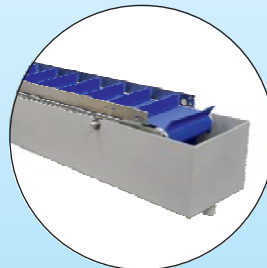
**Lifts to Overhead  
Conveyors**



**Multi-Lane Flat Belt  
Conveyors**



**Ready Made Meal  
Conveyors**



**Conveyors With Liquid  
Return Troughs**



**Fruit Packing Lines**

### **MONK Conveyors Limited**

Unit 9, The Christy Estate, Ivy Road, Aldershot, Hampshire GU12 4TX  
Tel: +44(0)1252 369800 Fax: +44(0)1252 369801 Email: [sales@monk-conveyors.co.uk](mailto:sales@monk-conveyors.co.uk)

Visit our website at: [www.monk-conveyors.com](http://www.monk-conveyors.com)